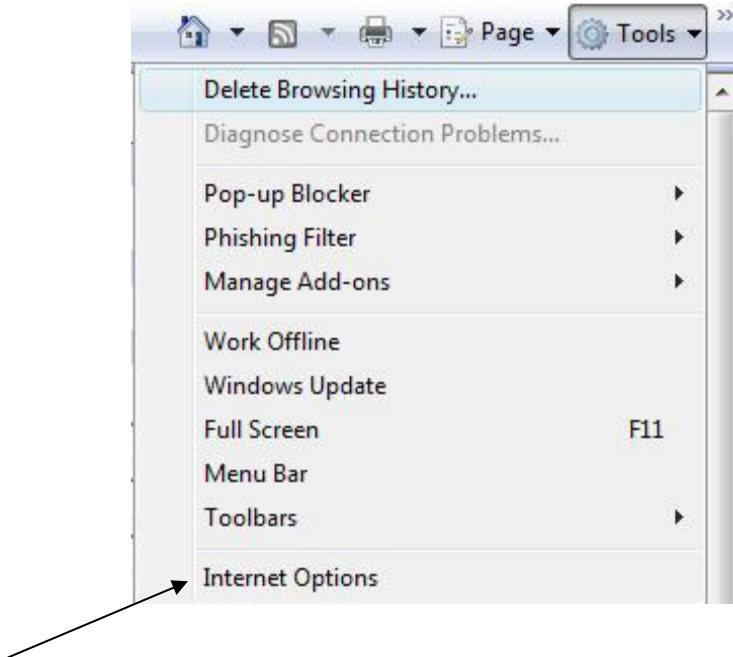
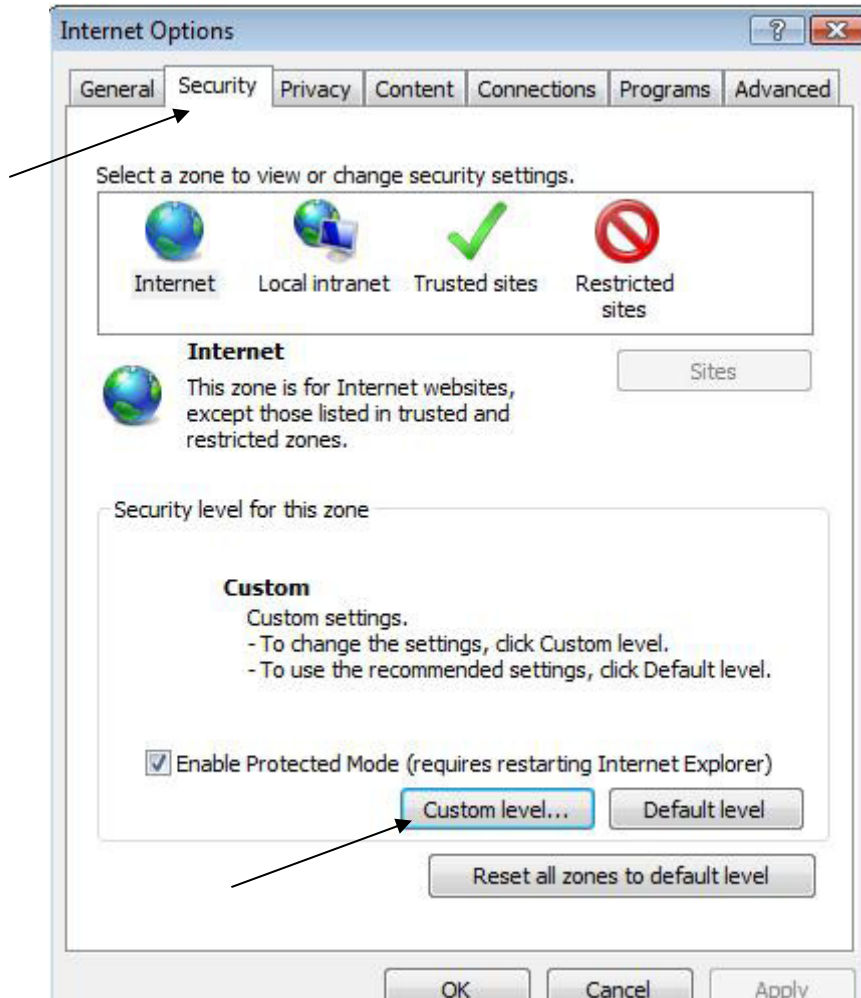


Internet Explorer Setup for DVR Integration

1. Open Internet Explorer, click on "Tools" located in the top menu bar. (If the "Menu" bar is minimized, right-mouse-click on upper Internet Explorer frame, and enable the Menu Bar).
2. Next, select "Internet Options"

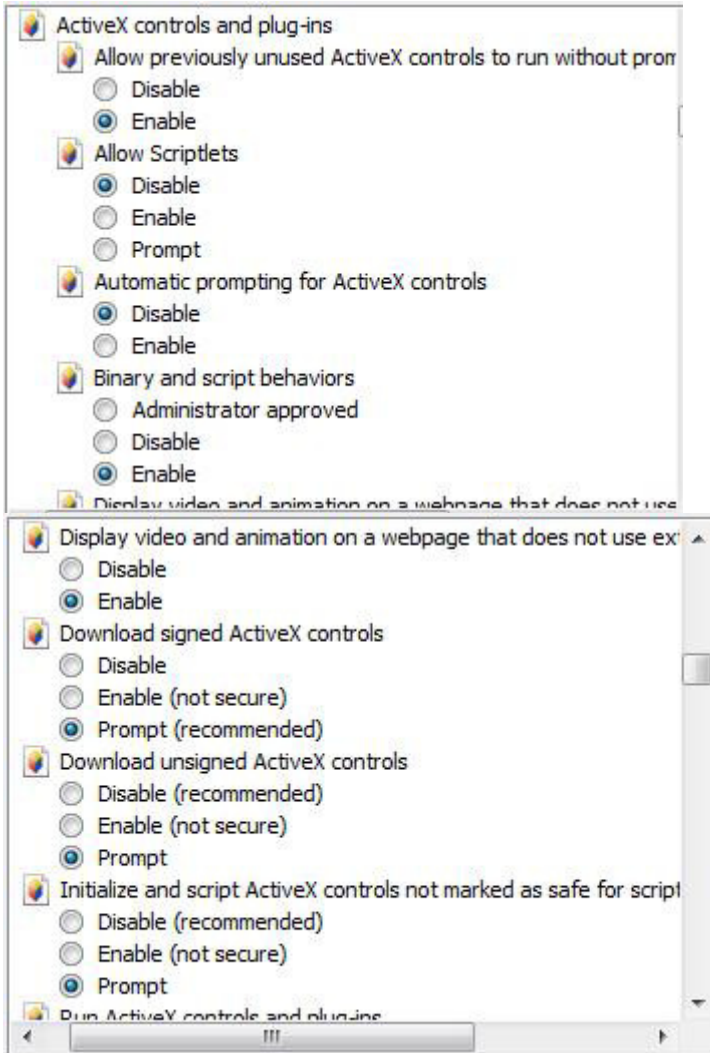


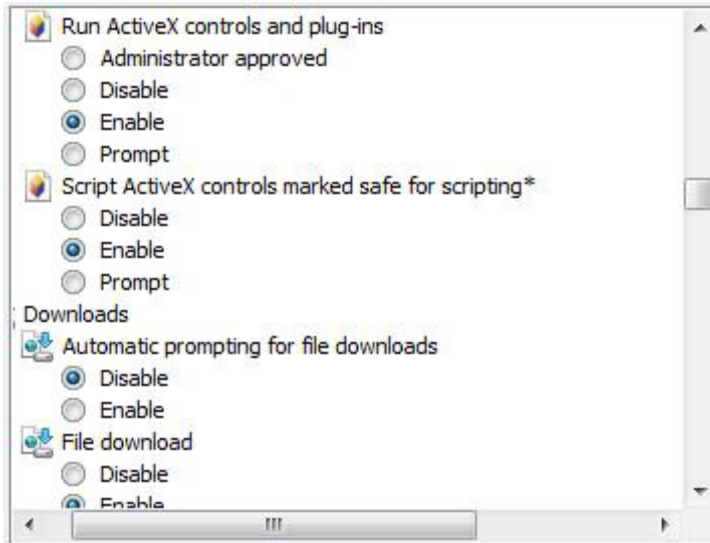
3. Once you click on Internet Options you will get this menu:



4. Click on "Security" tab at the top, then click the "Custom level" button.

5. You will get a pop up dialog that looks similar to the following. Scroll down to where it says "Active X" controls and plug-ins, and change your configuration to how it is shown on the illustrations:





6. On some versions of Internet Explorer, there is an option for "Only allow approved domains to use ActiveX controls". Select "Disable".
7. Once you change the settings click "Apply" and then on "OK". Refresh or Restart the Internet Explorer session. This will allow the new settings to take effect.
8. You should now be able to view your DVR via Internet Explorer by inputting the DVR IP address that was provided.
9. Normally Internet Explorer will ask the user for permission to install the ActiveX plugin. Click OK. The installation process should take about 40 seconds.
 - Suggestion: save this address as a "Favorite".
10. The default user name is: admin. Default password is all blanks.
10. Once connected, note the menu on the right side of the window. Double-Click on a camera from the menu on the right of the display. Double-click on the window with the camera data to display full-screen.
 - Once this procedure is followed once on a computer, it should not be necessary again.